

Greys Plains Road, Mount Mort - Timber Bridge Replacement

FACT SHEET | January 2019

The Project

Ipswich City Council is replacing the timber bridge with a new concrete box culvert.

The proposed scope of works will include:

- Removal of the existing timber bridge
- Installation of a new stormwater culvert crossing
- Installation of upstream and downstream protection works to the existing waterway
- Associated road works and road safety improvements
- Inclusion of roughing elements to assist with fish migration
- Minor service relocations to accomodate new works.

There will be partial road closures to carry out the works. Traffic control will be in place for the safety of local residents.

Project Timing

This Project is currently in design with construction expected in FY2019/20.

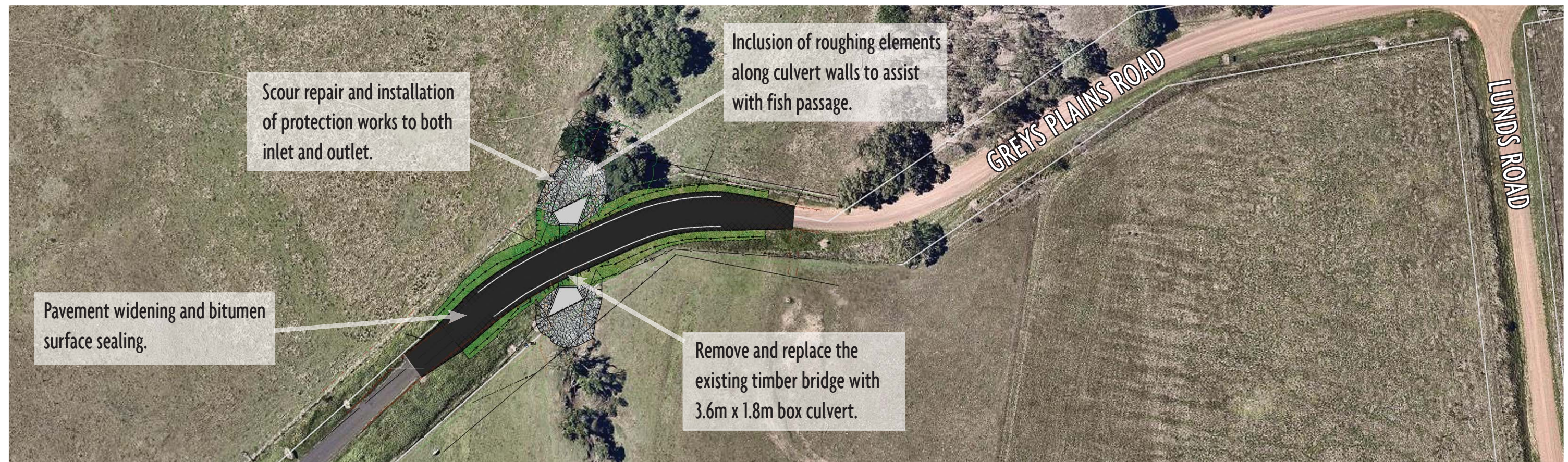
How do I find out more?

If you have any questions about this project please contact:

Ipswich City Council | Infrastructure Services Department

Phone | 07 3810 6666 (8:00am to 4:00pm Monday to Friday)

Email | ISProjects@ipswich.qld.gov.au



INF02055 - Greys Plains Road, Mount Mort - Proposed Timber Bridge Replacement



Produced by ICC Technical Services