



- **1 Council of Mayors (SEQ) Quarterly Report**  
Attachment 1 Presentation - Council of Mayors (SEQ) Quarterly Report..... 3
- **3 Councillor Local Office Space**  
Attachment 1 Cr Offices Options List ..... 19  
Attachment 2 Cr Offices Scoping Plans and Images ..... 23
- **4 Sustainable Ipswich - Ipswich's Sustainability Strategy**  
Attachment 1 Presentation - Sustainable Ipswich - Ipswich's Sustainability  
Strategy..... 25

--ooOOoo--





# COUNCIL OF MAYORS (SEQ) UPDATE

Ipswich City Council  
September 2021

# About Us

## AUSTRALIA'S LARGEST REGIONAL ADVOCACY ORGANISATION

Representing the ten councils, and more than three million residents in South East Queensland

## ONE REGION, ONE VOICE

Using the collective influence of our councils to shape government policy and funding outcomes

## DELIVERY OF REGION- SHAPING PROJECTS

Working together to explore and deliver solutions to the challenges and opportunities facing our region

### SCOTT SMITH

**CEO**

[Scott.smith@seqmayors.qld.gov.au](mailto:Scott.smith@seqmayors.qld.gov.au)

### MATT HENDRY

**Advocacy and Engagement Manager**

[Matthew.Hendry@seqmayors.qld.gov.au](mailto:Matthew.Hendry@seqmayors.qld.gov.au)

### MARLEE WENDT

**Media and Communications Coordinator**

[Marlee.Wendt@seqmayors.qld.gov.au](mailto:Marlee.Wendt@seqmayors.qld.gov.au)

### KATIE BEEBY

**Office Coordinator**

[Katie.beeby@seqmayors.qld.gov.au](mailto:Katie.beeby@seqmayors.qld.gov.au)

### LISA ELSE

**Finance Controller**

[Lisa.else@seqmayors.qld.gov.au](mailto:Lisa.else@seqmayors.qld.gov.au)

### Derek Ephrem

**Economic Development Coordinator**

[Derek.ephrem@seqmayors.qld.gov.au](mailto:Derek.ephrem@seqmayors.qld.gov.au)

### Aden Gutman

**Planning and Infrastructure Coordinator**

[Aden.gutman@seqmayors.qld.gov.au](mailto:Aden.gutman@seqmayors.qld.gov.au)

### Glenn MacRae

**City Deal Coordinator**

[Glenn.Macrae@seqmayors.qld.gov.au](mailto:Glenn.Macrae@seqmayors.qld.gov.au)

### John Howlie

**Resilient Rivers and Catchment Action Plan Coordinator**

[John.howie@seqmayors.qld.gov.au](mailto:John.howie@seqmayors.qld.gov.au)

# Strategic Plan



We are the voice  
of SEQ

- External events  
calendar

- Traditional and  
social media

- Federal and  
State advocacy



We are thought  
leaders

- SEQ City Deal

- SEQ 2032  
Olympic Project



We are partners in  
SEQ's future

- Regional  
partnerships

- Regional waste  
management

- SEQ Regional Plan  
Implementation



We are outcomes  
focused

- Regional  
investment  
attraction

- Freight project

- Resilient Rivers  
Initiative

- Water Security



We are  
innovative, agile  
and motivated

- Regular council  
engagement

- Staff  
development







## SEQ City Deal



- Objective.
- Current status.
- Next steps.





## BRISBANE 2032 – WHAT NOW?

- After a 6 year journey, the 2032 Games were awarded to Brisbane on 21 July.
- The Organising Committee of the Olympic Games (OCOG) must be established within 6 months of Games award (around Nov/Dec) and will include local government.
- The Olympic Coordination Authority (OCA) is also expected to be set up by the end of the year.
- There will also be a series of working groups covering areas including, transport, security
- COMSEQ is continuing to work with the State and Federal Gov, to understand the next steps for each Council and ensure Local Government is involved.
- The State and Federal Government have committed to funding Games infrastructure 50/50.
- The OCOG/OCA will be responsible for project delivery.
- CoMSEQ working with State and Federal and Council on joint approach to Investment and Trade attraction



**Brisbane 2032**  
Olympic and Paralympic  
Games Host  
*Queensland*







## Current Status

SEQ regional waste strategy sets a strategy to reduce waste to landfill.

Developed in consultation with Councils.

COMSEQ is working with State Gov on a rebate transition strategy... to ensure the rebate continues until waste to landfill is reduced.

COMSEQ is also working with the State Gov to establish a project management office to deliver the waste strategy.







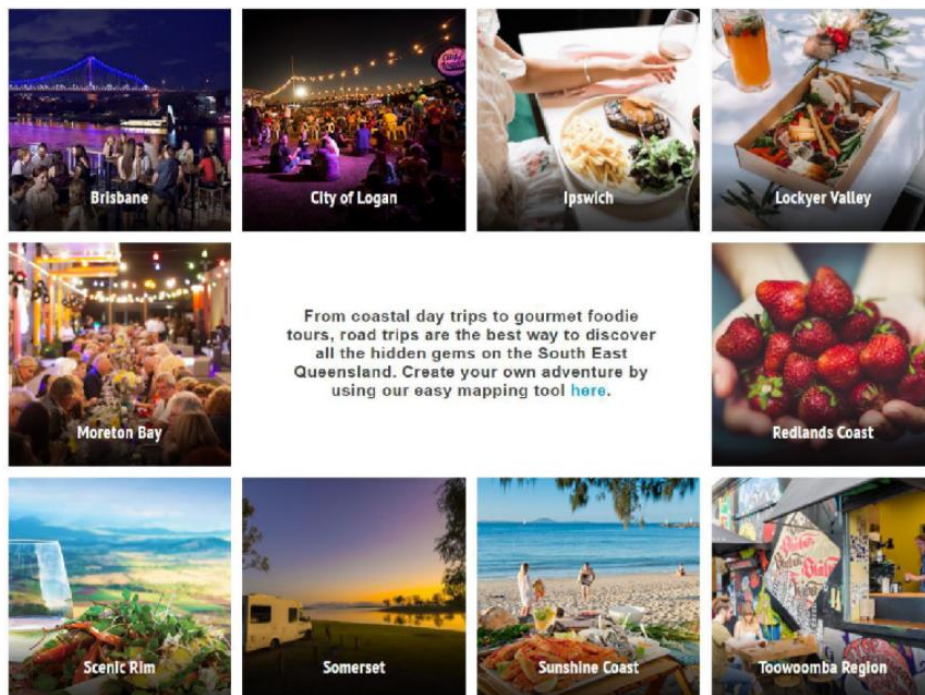
## Resilient Rivers Initiative

- ✓ A coordinated approach to catchment management across the region.
- ✓ Projects that support strong partnerships with Councils and industry.
- ✓ To keep soil on our land and out of our waterways
- ✓ To help protect our region's water security
- ✓ To improve the climate resilience of our region.
- ✓ A number of projects continue in Black Snake Creek and other Mid-Brisbane areas
- ✓ Joint catchment officer engaged for Bremer



## SEQ Food Trails

### Welcome to South East Queensland



- ✓ COVID provides good opportunity to increase regional tourism.
- ✓ Engaged a company to increase reach of SEQ Food Trails website.
- ✓ Working with Councils to populate website and increase reach.
- ✓ Connecting this to APCS communications



## Infrastructure and planning

- ✓ Work with Councils and State Government through Local Gov Working Group and Regional Planning Committee.
- ✓ Focus on Regional Plan review next year.
- ✓ Developing a strategy to ensure infrastructure is delivered as a result of the 2032 Games.





## Council engagement/advocacy

- ✓ [Local Government Forum](#) planned for November 5 – key topics include, waste, planning and Olympics (save the date).
- ✓ Working on new ways to communicate and engage with Councils more regularly.
- ✓ Canberra delegations have been impacted by COVID – looking to hold one in the lead up to the Federal election.
- ✓ Working on our first State delegation.



# COUNCIL OF MAYORS (SEQ)

@seqmayors

[seqmayors.qld.gov.au](http://seqmayors.qld.gov.au)





FACILITY	AREA	OPTIONS	MODIFICATIONS (general)	ORDER OF COST EST SUMMARY	COSTING LINK (Objective)
SPRINGFIELD LIBRARY	Existing Event Space Room GFA: 65sqm Access to Public Toilets adjacent Public kitchenette adjacent	EXCLUSIVE USE (no permanent walls - if a permanent division of this space is required, refer to Separate Enclosed Room for the General Booth Area for order of costs)	Locks and Card Reader	<b>THIS NOTE APPLIES TO ALL NON-CONSTRUCTION OPTIONS (NON HIGHLIGHTED RED)</b>  1. This is an Order of Cost Estimate, it precedes a Pre-Concept stage, no design was done. 2. Scope, Qualifications, Exclusions: refer to tab Basis of Estimate section 01 3. Construction Indirects: at standard 25% of Construction DJC 4. Concept and Design costs: at historic percentages for ICC projects. 5. Escalation: none, assume project delivery in FY22. 6. Construction duration: assumed 2 days 7. Risk budget: 25% for Pre-Concept stage  QLD Govt Waste Levy (wL) External Delivery: The Base Case for ICC estimates is that External Delivery contractors will dispose of the spoil at a recycling facility, so there will be no wL.	
			Additional furniture (Table and 8 chairs) Signage Lockable cupboard / credenza (1500Lx900Hx450D) Furniture Installation		
				\$22,000	objective: id: A7524127
		SHARED with Programmed Use	Signage  Additional furniture (Table and 8 chairs) Lockable cupboard / credenza (1500Lx900Hx450D) Furniture Installation	\$22,000 (refer top of page flyout comment)	objective: id: A7524127
	General Booth Area GFA: 28sqm Access to Public Toilets close by Public kitchenette close by	EXCLUSIVE USE area with Partition Panels	Design and Document new furniture plan		
			Specialist Acoustic Partition panels Additional furniture (table and 8 chairs) Signage ) Lockable cupboard / credenza (1500Lx900Hx450D) Installation	\$40,000 (refer top of page flyout comment)	objective: id: A7524127
		EXCLUSIVE USE - New Room (Fitout Required)	Design and certification  Walling and door  Ceiling modifications Utilities changes (air conditioning, lighting, fire detection and sprinklers etc) Signage (printed plate) Additional furniture (table and 8 chairs) Locks and Card Reader Signage (printed plate)  Subtotal On costs	\$280,000	objective: id: A7524154
JANE GORY COMMUNITY HUB (4 Christopher St Augustine Heights)	Building is one large open space with toilet and kitchenette in the middle: GFA: 70Msqm	EXCLUSIVE USE - New Room (Fitout Required) GFA: 28sqm	Design and certification  New walls and doors Utilities changes (air conditioning, lighting, fire detection and sprinklers etc) Signage		

			Additional furniture (table and 8 chairs) upgrades rear entry required for separate entry (refer to exclusions)	\$172,000	objective: id: A7524148
		SHARED with Programmed Use GFA: 70sqm	Locks and Card Reader  Additional furniture (table and 8 chairs) Locakble credenza (1500Hx900Hx450D) Installation Signage	\$22,000 (refer top of page flyout comment)	objective: id: A7524115
ROSEWOOD LIBRARY	Existing Event Space Room GFA: Public Toilets adjacent Public kitchenette adjacent	EXCLUSIVE USE	Locks and Card Reader  Additional furniture (table and 8 chairs) Locakble credenza (1500Hx900Hx450D) Installation Signage	\$22,000 (refer top of page flyout comment)	objective: id: A7524126
		SHARED with Programmed Use	Locks and Card Reader  Additional furniture (table and 8 chairs) Locakble credenza (1500Hx900Hx450D) Installation Signage	\$22,000 (refer top of page flyout comment)	objective: id: A7524126
	Other Meeting rooms (3)	EXCLUSIVE USE	Locks and Card Reader Additional furniture (table and 8 chairs) Locakble credenza (1500Hx900Hx450D) Installation Signage	\$22,000 (refer top of page flyout comment)	objective: id: A7524126
		SHARED with Programmed Use	Locks and Card Reader  Additional furniture (table and 8 chairs) Locakble credenza (1500Hx900Hx450D) Installation Signage	\$22,000 (refer top of page flyout comment)	objective: id: A7524126
REDBANK PLAINS LIBRARY (RPRR)	Existing Meeting Room GFA: 18sqm Public Toilets adjacent Public kitchenette adjacent	EXCLUSIVE USE	Locks and Card Reader  Additional furniture (table and 8 chairs) Signage Locakble cupboard / credenza (1500Lx900Hx450D) Installation	\$31,000	objective: id: A7524118

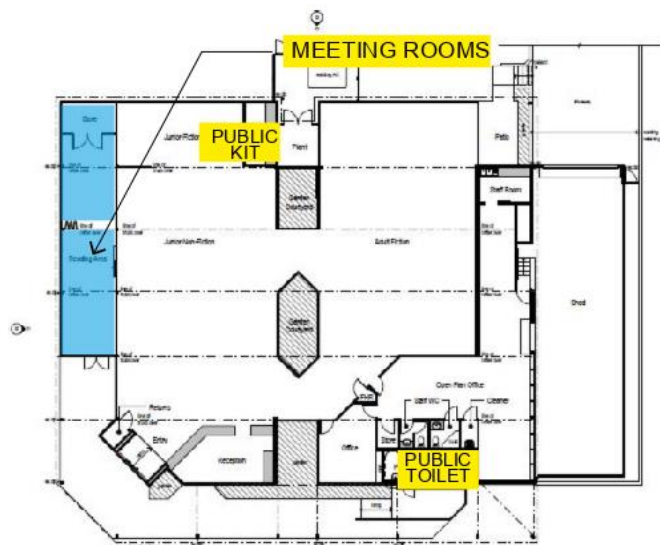
				(refer top of page flyout comment)	
		SHARED with Programmed Use	Locks and Card Reader  Additional furniture (table and 8 chairs) Locakble credenza (1500Hx900Hx450D) Installation Signage	\$22,000 (refer top of page flyout comment)	objective:id:A7524118
	New Demountable adjacent to existing GFA: 18sqm	EXCLUSIVE USE	Design and Certification  Footings and Services Con Demountable Bld (6x3) Ramps and access Connecting footpath External Lighting Locks and Card Reader Security infrastructure and connectivity Additional furniture (Table and 8 chairs) Signage	\$250,000	objective:id:A7524150
REDBANK PLAZA LIBRARY	Additional Lease Area in commercial complex - attached to existing Libray lease area : Total extra lease area 100sqm, but office ot be 28sqm  * Subjetc to lease agreement details / additional requirements may be needed	Exclusive Use (Fitout Required) GFA:28	Design and certification  Walling and door Ceiling modifications  Utilities Modifications Signage Additional furniture (Table and 8 chairs) Locks and Card Reader	\$195,000	objective:id:A7524418
		Shared with Programmed Use GFA:28	Locks and Card Reader  Additional furniture (table and 8 chairs) Signage Locakble cupboard / credenza (1500Lx900Hx450D) Installation	\$22,000 (refer top of page flyout comment)	objective:id:A7524118
ROSEWOOD SHOWGROUND COMMUNITY HALL	Showground Hall Currently a bookable space but consists of - Large Open hall area - Kitchen - small storage room  Modifications would need to be undertaken to divide and reduce the current 'hall'	Exclusive Use New Office (Fitout Required) GFA:28	Design and certification  Walling and door Ceiling modifications  Services Modifications Signage Additional furniture (Table and 8 chairs)	\$195,000	objective:id:A7524442
		Shared with Programmed Use Whole building	Locks and Card Reader		

		Additional furniture (table and 8 chairs) Signage Locakble cupboard / credenza (1500Lx900Hx450D) Installation			
				\$22,000 (refer top of page flyout comment)	objective:id:A7524121
REDBANK AND COLLINGWOOD PARK SPORTS COMPLEX	Redbank	Requires negotiation with Lease Holder			
COMMUNITY CENTRES	Riverview	Requires negotiation with Lease Holder			
	Redbank Plains South	Requires negotiation with Lease Holder			
	Springfield Central	Requires negotiation with Lease Holder			

Access to Event Space from lift

Community Hub from street, adjacent to carpark



**REDBANK PLAINS LIBRARY**

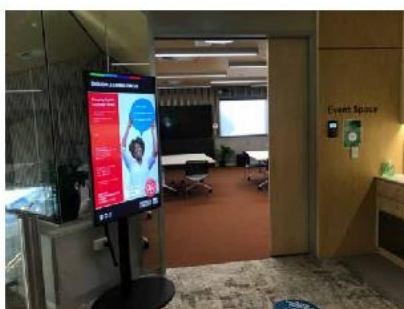
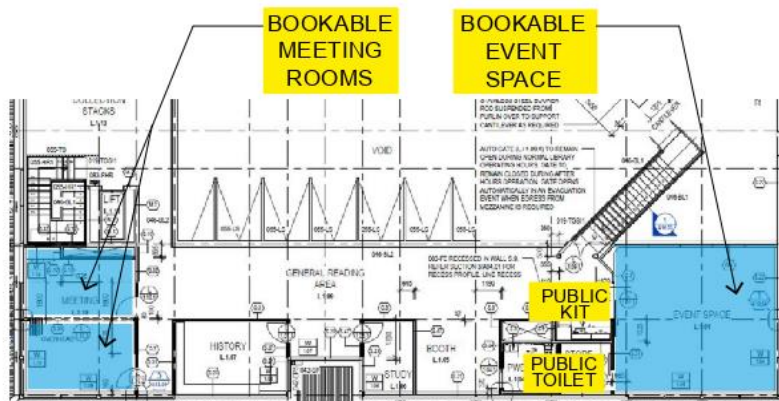
Meeting Room: Capacity 6



Community Room Capacity 6



Kitchette

**ROSEWOOD LIBRARY: Mez Lv**

Event Space: Mez Lv



Public Booth Area : Ground Level

# A socially, economically and environmentally **Sustainable Ipswich**

Councillor Briefing Session  
Environment and Sustainability Branch



# Sustainability

/səsteɪnəˈbɪlɪti/

*Noun*

“The ability to be maintained at a certain rate or level”

“Avoid the depletion of natural resources in order to maintain ecological balance”

Source: Oxford languages, 2021

## Local Government Act 2009

- a system of local government in Queensland that is accountable, effective, efficient and **sustainable**
- **sustainable** development and management of assets and infrastructure, and delivery of effective service
- **sustainable** development is development that is designed to meet present needs while also taking into account future costs (including costs to the environment and the depletion of natural resources, for example)

# Sustainability

## The Global Context



## Australian Context

**“The SDGs are a reflection of our values and ambitions. They are the contemporary manifestation of the ‘fair go’.”**

*Senator the Hon Concetta Fierravanti-Wells, Minister for International Development and the Pacific at the 2nd Australian Sustainable Development Goals Summit, 13 March 2018*

**Under the Paris Agreement, Australia has made an international commitment to reduce greenhouse gas emissions by 26-28% below 2005 levels by 2030.**

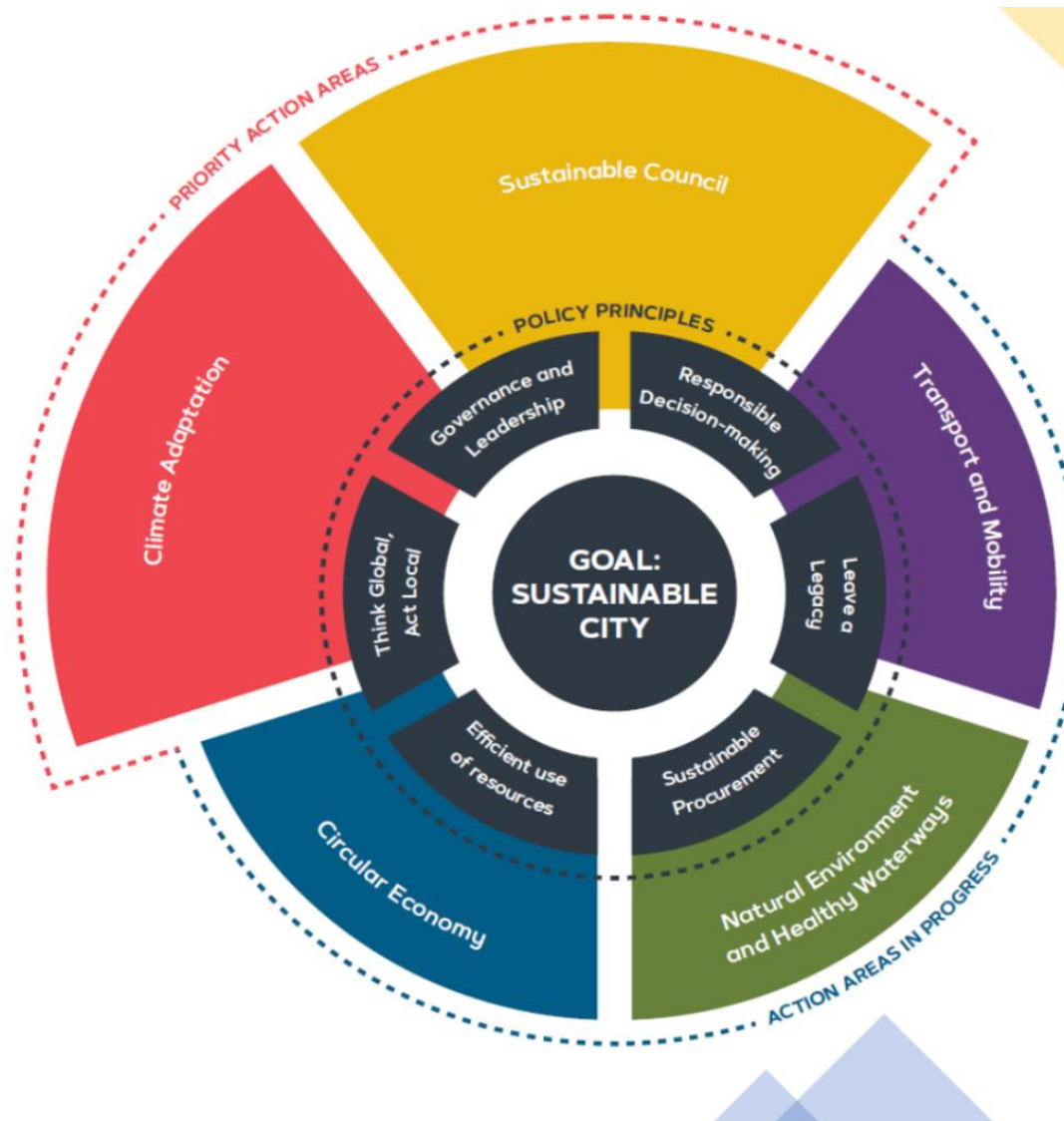
## Queensland Context

**“In an overwhelming response to our discussion paper Advancing Climate Action in Queensland: Making the transition to a low carbon future, Queenslanders told us that action on climate change is needed now to create new jobs and sustainable communities in Queensland”**

*Steven Miles MP, Minister for Environment and Heritage Protection and Minister for National Parks and the Great Barrier Reef, 2018*



**Community  
consultation  
revealed what  
sustainability  
in Ipswich is:**





**Our Community gave us a  
sustainability rating:**



Where are we excelling or  
improving in Sustainability

Circular Economy

Natural Environment

Transport and Mobility

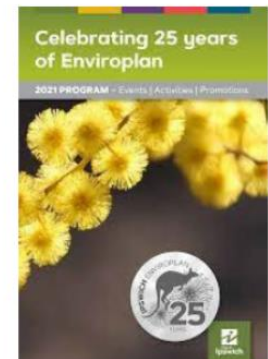
IPSWICH

## Ipswich Councillors act to reverse massive waste streams

Dec 11 2020 | Updated December 11, 2020

### Ipswich City Council sets sights on improving local rivers

16 June 2020



Ipswich council set to adopt first environmental offsets policy in its history: What it means for bushland and owners

### Hectares of protected land added to ICC's portfolio

Six-figure sum deal will grow area's conservation land to over 1000 hectares.



- Resilient and well-informed community



- Reduced carbon emissions
- Improved city cooling
- Reduced energy consumption



- Support local jobs
- Increase resource efficiency
- Reduced operating costs



- Lead by example

## What are our gaps and opportunities

### Sustainable Council

Fuel, water and energy efficiency measures

Sustainable procurement

Monitoring and evaluation

### Climate change

# Intergovernmental Panel on Climate Change (IPCC)

**August 2021: Urgent action recommended and strong scientific evidence: Sixth assessment report by the IPCC**

- Intergovernmental Panel on Climate Change (IPCC)
  - The Intergovernmental Panel on Climate Change (IPCC) assesses the peer-reviewed literature on climate change every five to six years, and publishes its findings in Assessment Reports.
  - The IPCC reports are themselves subject to an intense peer-review process involving hundreds of scientific experts and government reviewers.
  - **This unprecedented level of peer and government review makes this compendium of climate change science one of the most scrutinised documents in the history of science.**

# What the Australian Government proposes

## The role of governments

### 1 PROVIDING INFORMATION

- Providing information that has broad public benefits to build understanding and better inform decision making

### 2 SET THE RIGHT CONDITIONS

- Ensure that regulatory arrangements and policy settings facilitate adaptation and do not distort private incentives and market signals
- Ensure that risk is appropriately recognised and responsibility for its management is apportioned and communicated
- Providing policies that clarify and strengthen private incentives and responsibility

### 3 PROVIDE PUBLIC GOODS AND SERVICES, AND MANAGE PUBLIC ASSETS

- Flood and coastal protection
- Emergency management, public health and safety, and natural resources protection
- Management of public lands, national parks and government owned infrastructure
- Appropriately factor climate change risks into management and funding of public goods, services and assets

## Responsibilities for each level of government

All levels of government are expected to consider climate change adaptation in their administration and management of existing assets, programs and legislation. All governments should also seek to collaborate on consistent and combined approaches wherever it is efficient to do so.



AUSTRALIAN GOVERNMENT

- Provide national science and information
- Provide leadership on national adaptation reform
- Maintain a strong, flexible economy and a well-targeted social safety net



STATE AND TERRITORY GOVERNMENTS

- Provide local and regional science and information
- Working with the Commonwealth to implement national adaptation reform
- Encouraging climate resilience and adaptive capacity



LOCAL GOVERNMENTS

- Facilitate building resilience and adaptive capacity in the local community, including through providing information about relevant climate change risks
- Work in partnership with the community, locally-based and relevant NGOs, business and other key stakeholders to manage the risks and impacts associated with climate change
- Contribute appropriate resources to prepare, prevent, respond and recover from detrimental climatic impacts

## The role of private parties



INDIVIDUALS, GROUPS AND BUSINESSES

Usually individuals, groups and businesses are best placed to manage risks to their own assets and activities from climate change as the benefits are a strong incentive to act. To manage risks, private parties need to:

- Be aware of the risks and the responsibility for managing them;
- Take steps to understand the magnitude and nature of the specific risks to their assets and activities
- Develop and implement strategies and actions to manage the risks

Some groups may face particular structural and other disadvantages which need further assistance.

FOR MORE INFORMATION on roles and responsibilities please visit:  
<http://environment.gov.au/climate-change/adaptation/strategy>



Australian Government  
Department of Agriculture, Water and the Environment



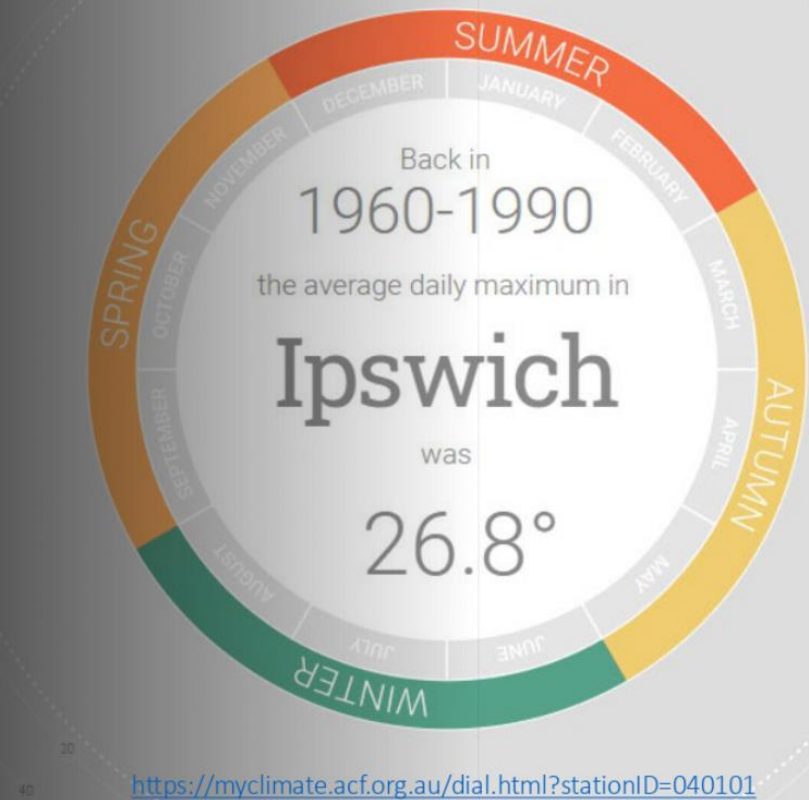
LOCAL GOVERNMENTS

- Facilitate building resilience and adaptive capacity in the local community, including through providing information about relevant climate change risks
- Work in partnership with the community, locally-based and relevant NGOs, business and other key stakeholders to manage the risks and impacts associated with climate change
- Contribute appropriate resources to prepare, prevent, respond and recover from detrimental climatic impacts





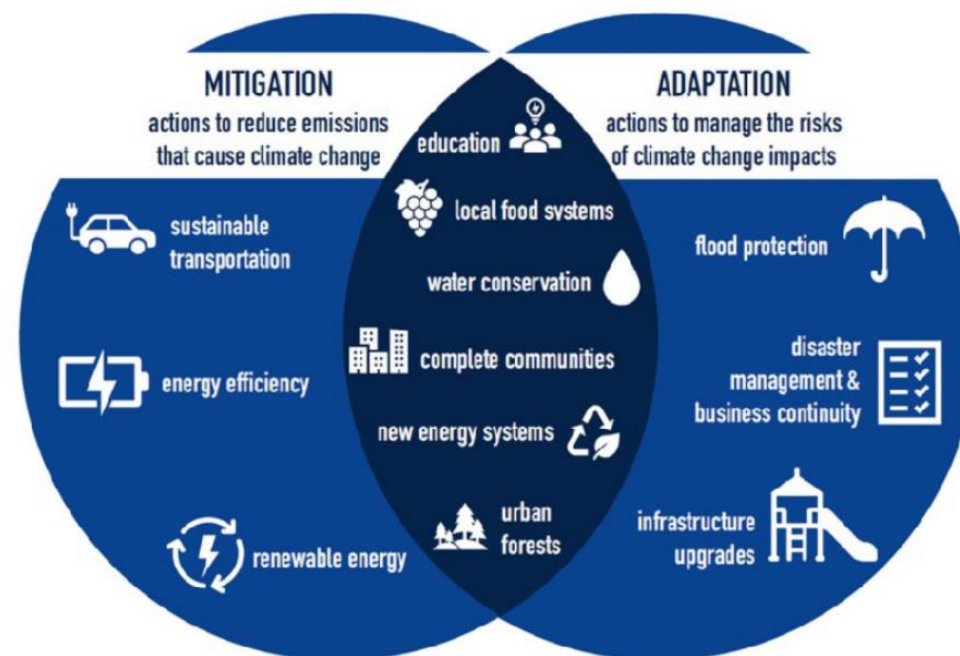
# My Climate *Ipswich 2050*



# Managing Climate risk

## What is Ipswich CC doing already:

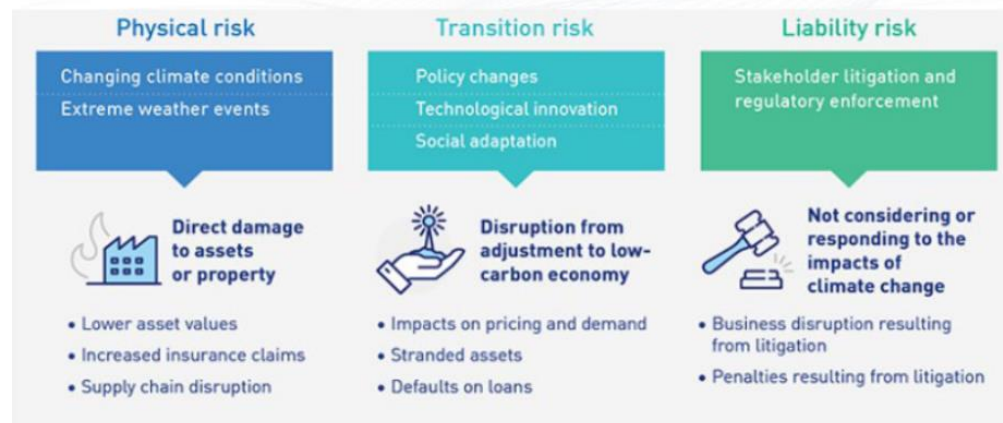
- Queensland Climate Resilient Council
- Resilient Rivers Initiative
- 5-star, Green Star rated Admin Building
- Ipswich ICP
- Disaster Management



Pending 31 July 2021

## Consultation on draft Prudential Practice Guide on Climate Change Financial Risks

The Australian Prudential Regulation Authority (APRA) has released for consultation its draft guidance to banks, insurers and superannuation trustees on managing the financial risks of climate change.



ASIC Commissioner Cathie Armour says disclosing and managing climate-related risk is a key director responsibility.

Climate-related risks are an emerging area that may have a direct impact on entities' financial statements.

According to Deloitte Access, unchecked climate change would reduce Australian economic growth by 3.6 per cent a year and cost 310,000 jobs annually by 2050. By 2070, the economic cost will have almost doubled to 6 per cent, or \$3.4 trillion in present value terms, and 880,000 jobs.

## Deloitte Access Economics

The research by Deloitte Access Economics suggests the country could adopt a net-zero emissions policy at a fraction of the cost of dealing with the pandemic that would help grow the economy over the next half century and add a quarter-of-a-million jobs.



## Climate risk: Costs and implications



## Who is carbon neutral?



## Who is reducing emissions?





# Proposed Key Sustainable Council Targets

**1**

Renewable energy to provide at least 50% of Council's electricity needs by 2026.

**2**

Reduce Council's greenhouse gases by at least 50% by 2026.

*Ipswich City Council responding effectively to climate change*